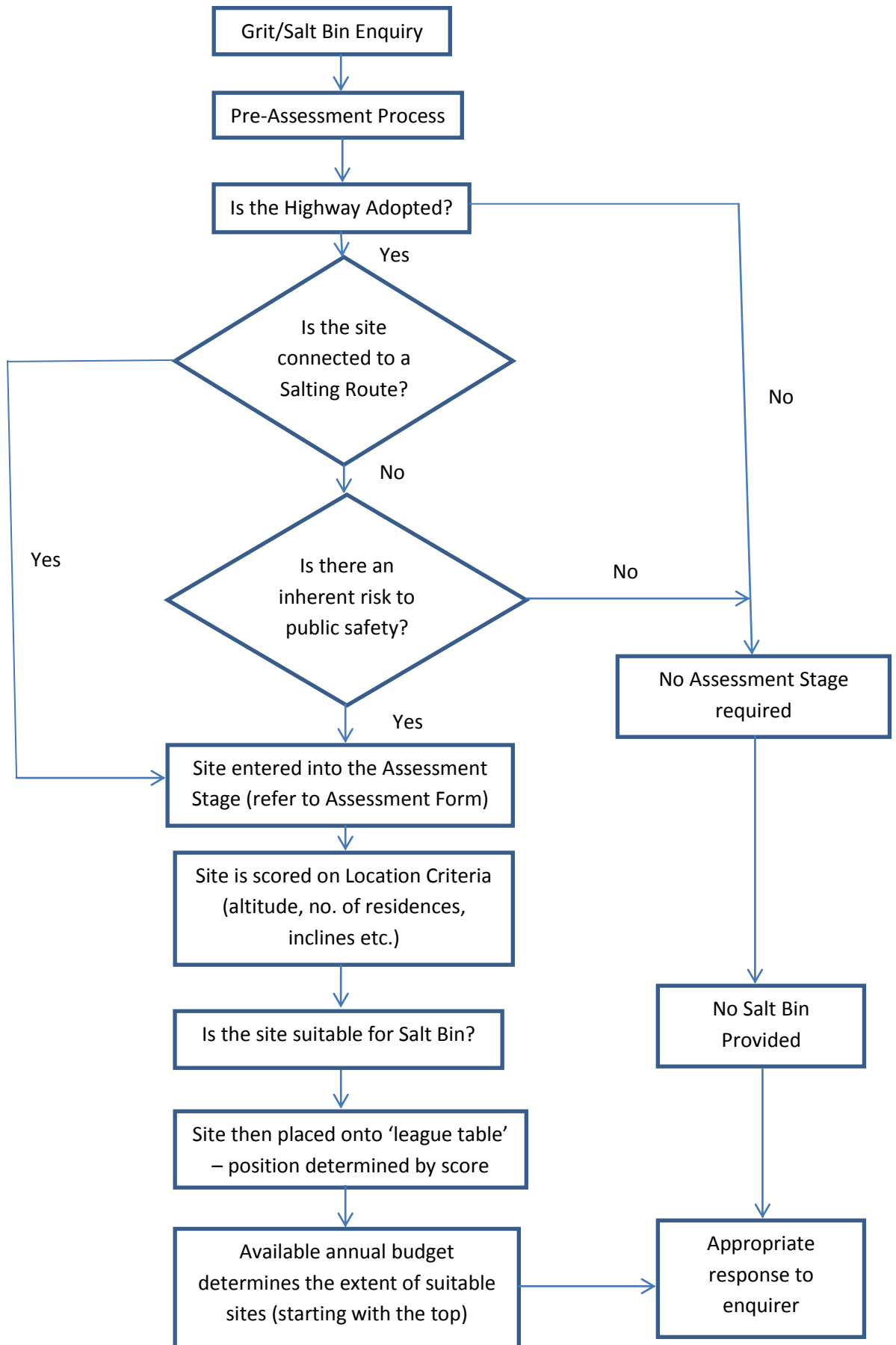


Assessment of Grit / Salt Bin Requests



Grit/Salt Bin Assessment Form

Location Details			
Proposed Placement Details			
Is location connecting onto an existing Salting Route?	Yes	No	Details
Is there a risk to Public Safety?	Yes	No	Details
Assessment Criteria (use this if Yes to connecting onto a Salting Route or Risk to Public Safety)			
Criteria	Score/Points	Details	
Altitude			
Number of Residences affected (a point per residence if maximum score)			
Highway Gradient (a point per degree if maximum score)			
Specific circumstances for this location (nearby school/ doctor's surgery, residential care home, dialysis patients etc.)			
TOTAL			

Assessment Officer:.....

Date:.....

Criteria Explanations overleaf

Form Explanations

Risk to Public Safety – inherent risks at this location such as high trafficked roads/ footpaths, presence of vulnerable adults/ children, exposed to the elements, predominantly in the shade (especially in the mornings) etc.

The scoring is as follows for each criteria:

Altitude

400 – 350m – score 7

350 – 300m – score 6

300 – 250m – score 5

250 – 200m – score 4

200 – 150m – score 3

150 – 100m – score 2

100 – 50m – score 1

50m – 0m – score zero

Number of properties affected

- 5 point for a single property,
- 10 points for a street
- 15 points for an estate.

Gradient of slope

- points for a flat road,
- 5 points for a slight gradient - up to 10% (1 in 10)
- 10 points for medium gradient - up to 25% (1 in 4)
- 15 for a steep gradient - over 25% (1 in 4+)

Specific Circumstances

0 – 10 - These are judged on a case by case basis, e.g. locations in shade, junctions, school crossings; as well as the siting of schools, hospitals, residential homes etc.

Weighting

Each score is taken as set out, any weighting has already been considered in the existing figure range.